

Zhejiang Yongtallong Electronic Co.,Ltd.

No.320. Tongsheng Road
Tongxiang ,Jiaxing City,
Zhejiang Province ,P.R.China
314500
www.ytl-e.com

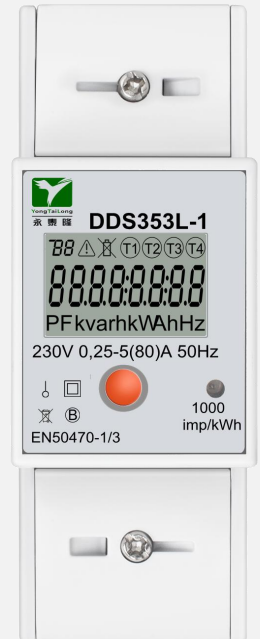
Data Sheet

DTS353L Series

DIN Rail Multifunctional Single phase Power Meter (MID Certified)

- **DDS353L-1:** Meter With RS485 Modbus Communication,Bi-Directional
- **DDS353L-2:** Basic meter Without RS485 Communication,Bi-Directional

High Quality to meet your various requirements!



Single Phase Multifunctional Meter

The DTS353L Series Digital Power Meter works directly
connected to a maximum load 80A AC circuit

This meter has been MID B&D Certified by SGS UK,
proving both it's accuracy and quality. This certification
allows this model to be used for any sub-billing application

MID

Zhejiang Yongtailong Electronic Co.Ltd.
DDS353L Series Three Phase Din Rail kWh Meter
www.ytl-e.com

1. Specifications

Technical Parameters

Content	Parameters
Standard:	EN50470-1/3
Rated Voltage:	230V
Rated Current:	0,25-5(30)A,0,25-5(32)A,0,25-5(40)A,0,25-5(45)A, 0,25-5(50)A,0,25-5(60)A, 0,25-5(80)A,
Impulse Constant:	1000 imp/kWh
Frequency:	50Hz
Accuracy Class:	B
LCD Display:	LCD 5+3 = 99999.999kWh
Working Temperature:	-40℃ ~ 70℃
Power Consumption:	<12VA <1W
Average Humidity:	≤75% (Non Condensing)
Maximum Humidity:	≤95%
Start Current:	0.004Ib
Case Protection	IP51 indoor
Protective class	II

2. Meter Series Details

Type	DDS353L-1	DDS353L-2
Impulse Constant	1000imp/kWh	1000imp/kWh
Communication	RS485 Modbus	N/A
Baud rate	9600/4800/2400/1200	N/A
SO output	YES	YES
Backlight	N/A	N/A
Li-Battery	YES	N/A
Multi-tariff	N/A	N/A
Measurement Mode	01 Total= forward 05 total =forward +reverse 09 Total =forward -reverse	01 Total= forward 05 total =forward +reverse 09 Total =forward -reverse
Button	Press Button	Press Button
Button function	Page turning only	Page turning only
Measurement Mode setting	RS485 Only	Factory setting only

3. LCD Display layout





PF kvarh kWh Hz

DDS353L-1/DDS353L-2

LCD Scrolling Display Page

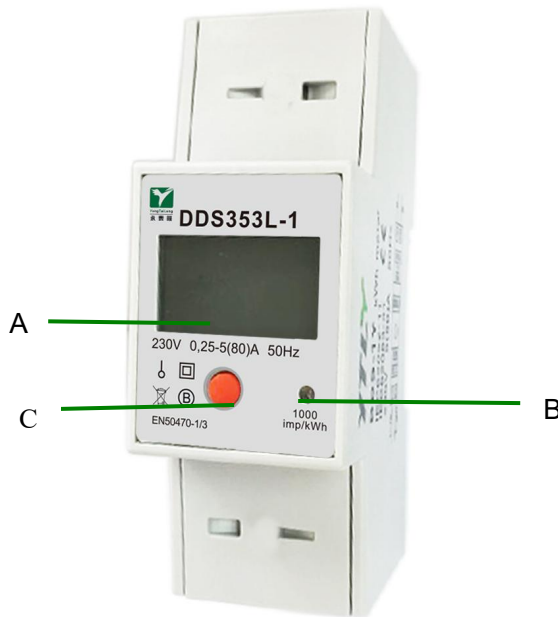
Page	Content	Unit	Format	Remark
1	Current date		DD/MM/YY	Only for DDS353L-1
2	current time		HH:MM:SS	Only for DDS353L-1
3	Total active energy	kWh	5+3 00000.000	
4	Forward active energy	kWh	5+3 00000.000	
5	Reverse active energy	kWh	5+3 00000.000	With indicator “ -”
6	Total reactive energy	kvarh	5+3 00000.000	
7	Forward reactive energy	kvarh	5+3 00000.000	
8	Reverse reactive energy	kvarh	5+3 00000.000	With indicator “ -”
9	Voltage	V		
10	Current	A		
11	Frequency	Hz		
12	Active power	kw		
13	Reactive power	kvar		
14	Apparent power	kva		
15	Power factor	PF		
16	Scrolling time	LCd-t		
17	Combined code	CodE		
18	SO output	SO		
19	Meter SN number	1d		
20	485 ID	1d		Only for DDS353L-1
21	485-Baud	bd		Only for DDS353L-1

4. Description

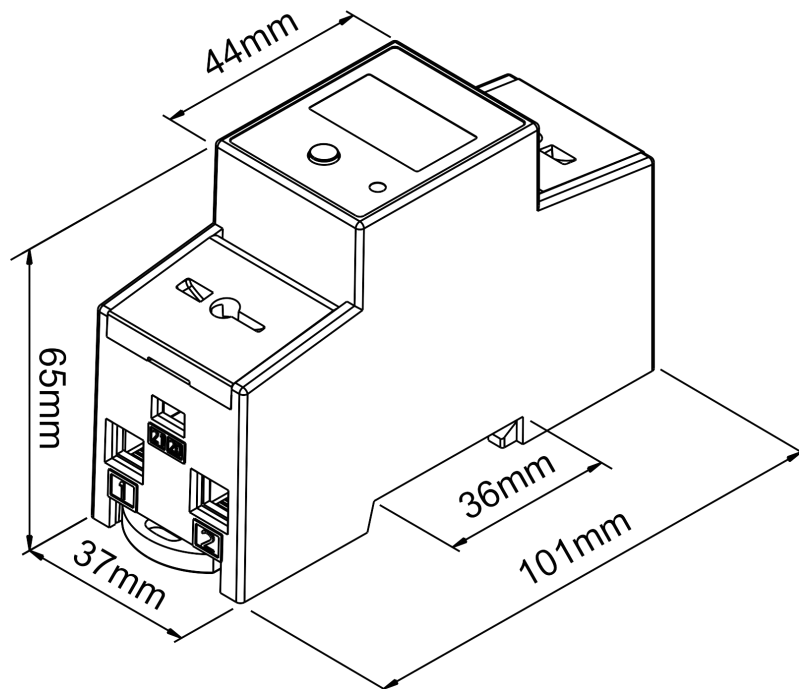
A LCD

B Pulse indication

C Scrolling button

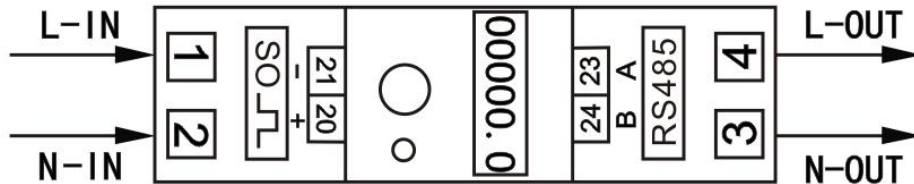


5. Meter Dimensions

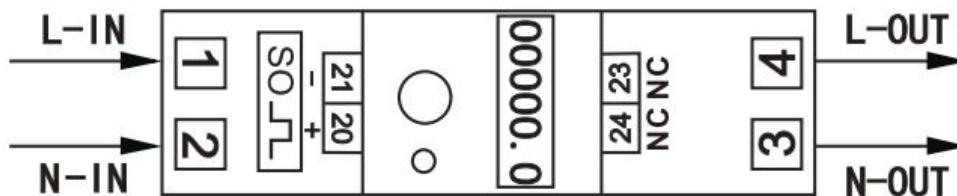


6. Connection Diagram

DDS353L-1:



DDS353L-2:

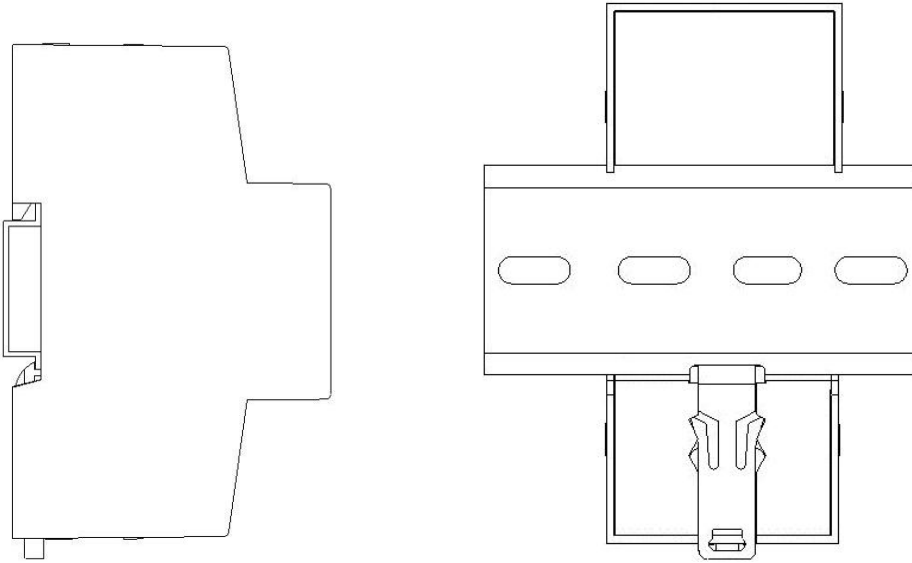


7. Safety Instructions

- Case is sealed, do not open the meter. No warranty if case is opened.
- The meter should be installed indoor or in the outdoor electric meter box.
- The meter is intended to be installed in a Mechanical Environment 'M1', with Shock and Vibrations of low significance, as per 2014/32/EU Directive.
- The meter is intended to be installed in Electromagnetic Environment 'E2', as per 2014/32/EU Directive.

Installation Instruction

- * Choose 35mm standard Din-Rail (the length is confirmed by yourself), fixed them in the location which are waiting for installation;
- * Push down the clip under the bottom of the meter for a gear
- * Put the meter into the Din-rail then push up the clip for a gear, install meter to the Din-rail, see



Information for Your Own Safety

This manual does not contain all of the safety measures for operation of this equipment (module, device) because special operating conditions, local code requirements or local regulations may necessitate further measures. However, it does contain information which must be adhered to for your own personal safety and to avoid damage to the equipment. This information is highlighted by a warning triangle with an exclamation mark or a lightning bolt depending on the severity of the warning.



Warning

Means that failure to observe the instruction can result in death, serious injury or considerable material damage.



Caution

Means hazard of electric shock and failure to take the necessary safety precautions will result in death, serious injury or considerable material damage.

Qualified personnel

Installation and operation of this equipment described in this manual may only be performed by qualified personnel.

Only people that are authorized to install, connect and use this equipment and have the proper knowledge about labeling and grounding electrical equipment and circuits and can do so according to safety and regulatory standards are considered qualified personnel in the manual.

Use for the intend purpose

The equipment (device, module) may only be used for the application cases specified in the catalog and the user manual and only in connection with devices and components recommended and approved by YTL.

Exclusion of liability

We have checked the contents of this publication and every effort has been made to ensure that the descriptions are as accurate as possible. However, deviations from the description cannot be completely ruled out, so that no liability can be accepted for any errors or omissions in the information given. The data in this manual is checked regularly and the necessary corrections will be included in subsequent editions. If you have any suggestions, pls let us know.

Subject to technical modifications without notice.

Copyright

Copyright Zhejiang Yongtailong Electronic Co., Ltd. April 2013 All rights Reserved.

It is prohibited to pass on or copy this document or to use or disclose its contents without our express permission. Any duplication is a violation of the law and subject to criminal and civil penalties. All rights reserved, particularly for pending or approved patents award or registered trademarks.

General Warning

After removing the packaging make sure the integrity of the unit. If in doubt don't use the equipment and contact technical staff.

Mounting of electric appliances must be carried out only by skilled electricians. It is imperative to observe the generally applicable safety measures.

In case of failure and /or malfunctioning of the device, turn off it. For any repair only contact technical staff. Failure to comply with the above may compromise the device safety.

Warranty

The manufacturer will repair or exchange the products while the lead seal is still existed, within 18 months, when discovering the products not accordance with the technical specification.

8. Technical support

For any problems of our products please contact:

Zhejiang Yongtailong Electronic Co.,Ltd

No. 320 Tongsheng road, Tongxiang Zhejiang, China

Post:314500

Tel: 0573-88105559

Fax: 0573-8810042

Web: www.ytl-e.com

